

MOBILER
LINKING RAIL & ROAD

railcargo.com

C11
S18

30
2550
L

5L

TODAY. TOMORROW. TOGETHER.

MOBILER

Presentation MOBILER

The hydraulic lifting device on the MOBILER vehicle enables quick and easy handling of containers and swap bodies between trucks and wagons.

- No crane required for handling
- No connecting siding required



MOBILER – your benefits

- **Direct connection:** reach industrial centres even without a connecting siding
- **Efficient transshipment:** fast handling between truck and wagon
- **Europe-wide end-to-end deliveries:** seamless logistics right to the destination
- **Customised equipment solution:** tailored to your requirements
- **Expanded storage capacity:** MOBILER containers as a flexible and efficient temporary storage solution minimise expensive truck downtimes



MOBILER

MOBILER – usage in many ways

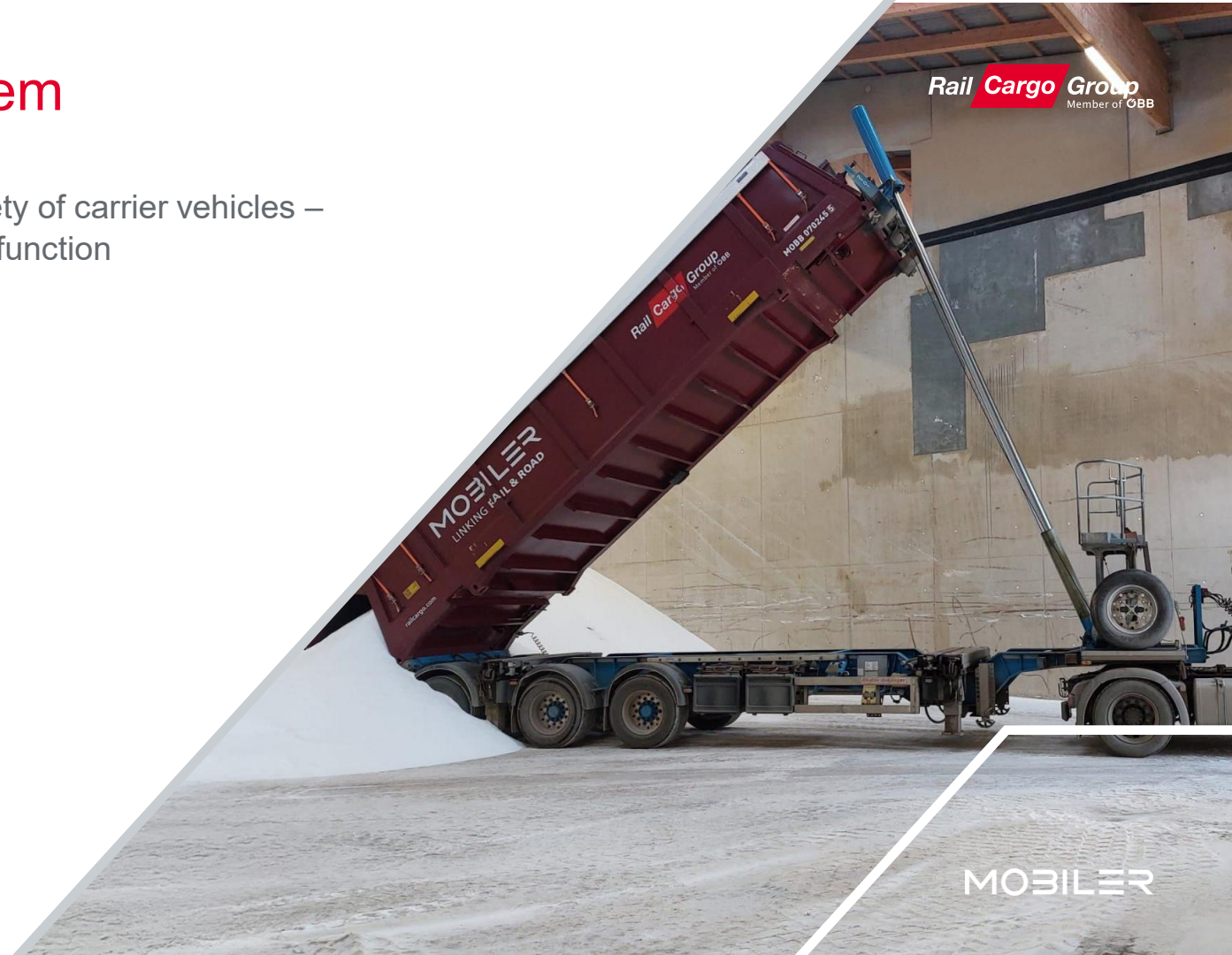
- For customers without connecting siding
- First and last mile on the factory premises using a MOBILER vehicle
- For the development of industrial centres without railway siding
- Safe and fast transshipment of all goods and containers
- Tailored to your needs
- For all types of waste, palletised goods, liquids, dangerous goods, bulk goods or building materials
- Decentralised supplement to combined transport terminals



MOBILER system

Installation on a wide variety of carrier vehicles –
3-axle semi-trailer with tilt function

Rail Cargo Group
Member of OBB



MOBILER

MOBILER system

Full flexibility guaranteed – if a carrier vehicle is not around our MOBILER containers can be lifted by the gripper edge and place on a 30 ft semi-trailer with tilt function.



Our selection of MOBILER containers for your transport



30 ft Halftainer



30 ft bulk materials container



Multitainer 36 – H



30 ft Multitainer with bulk materials



Multitainer 36 – K



BIO grain container

MOBILER MULTITAINER

The container innovation for **heavy bulk goods** and **palletised goods** enables round trips with a wide range of goods, including e.g. garbage, granulated slag, cinder, clinker, waste glass and all palletised goods.

Rail Cargo Group
Member of OBB



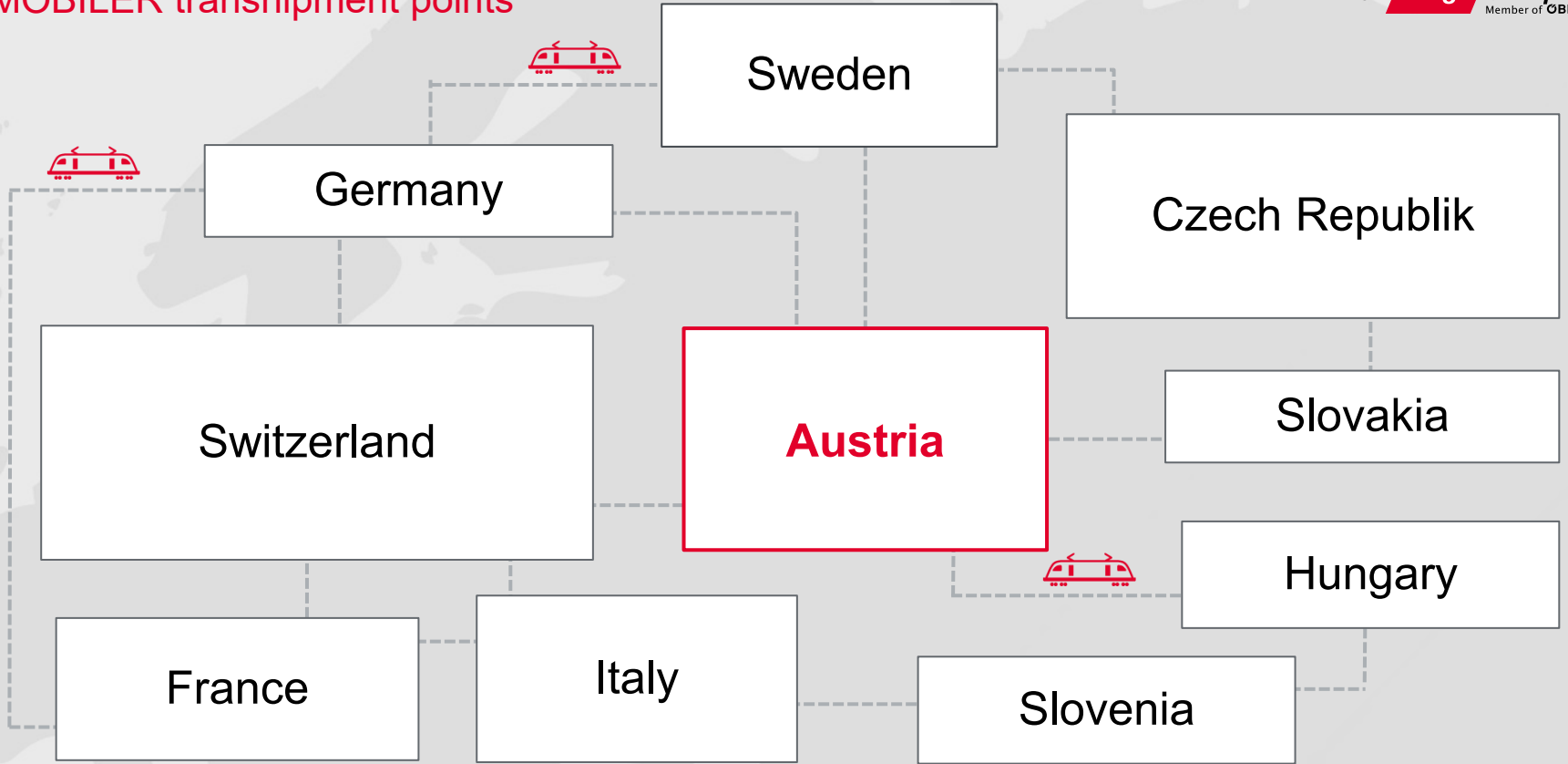
MOBILER

MOBILER platform

Our motivation is innovation: these platforms **were newly built** to enable our customers to **use their stacker for the manipulation** of our containers on their premises without any further assistance.



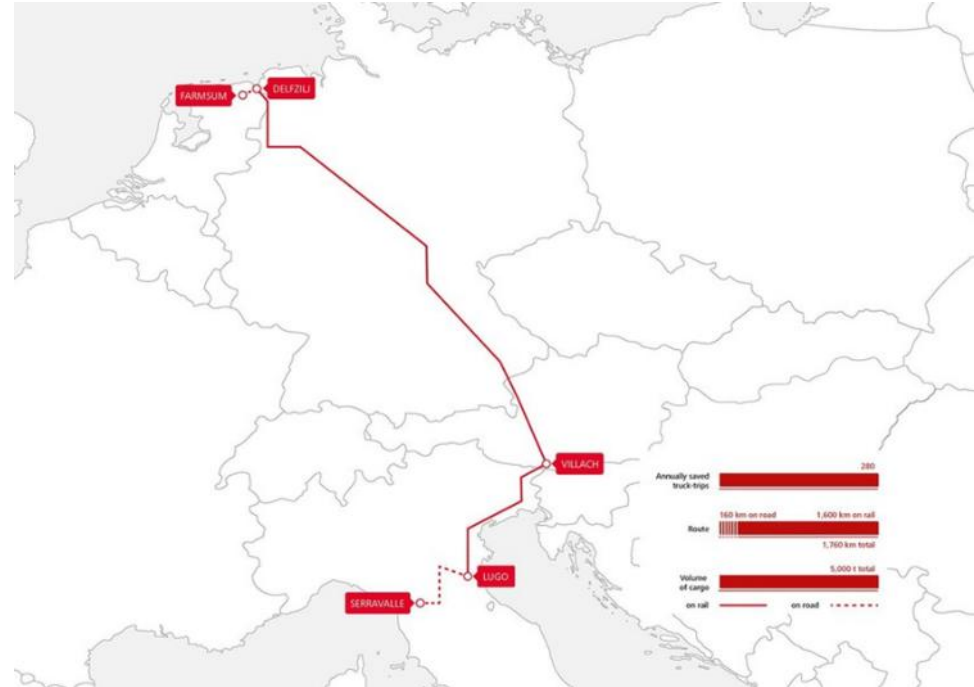
MOBILER transshipment points



End-to-end with MOBILER – How it's done

A practical example for one of our newest customers:

- quantity: 5,000 tons
- goods: municipal waste
- distance: 1,760 km
by road 00,160 km
by rail 01,600 km
- End-to-End-logistics including
 - transshipment and first mile via Terminal Lugo
 - int. singlewagon-transport
 - MOBILER equipment
 - last mile via MOBILER truck in the train station Delfzijl



Our reference customers

Building materials, industries, disposal, organic feed, ... Customers from a wide variety of industries show that innovative logistics can be both ecological and economical.

Alpacem

austria
glasrecycling
Ein Unternehmen der ASA

apr | Austria Papier
Recycling

ASAMER

bawu
AG Beschäftigungsspendenkasse für
ArbeitnehmerInnen und Familienmitglieder

BEFESA

BME
BAUER + MOOSLEITNER
ENTSORGUNGSTECHNIK

ENERGIE AG
Umwelt Service
Wir denken an morgen

EVN

FCC
Environment

GUBERT

HOLCIM

KAINDL
FLOORING

DAKA

LEUBE
BAUSTOFFE

LINZ AG

LOACKER

LogServ
Logistik in Bewegung

MINERAL

MM
KARTON AG

MOLDAN
Baustoffe

MONTANWERKE
BRIXLEGG

NLP
Group

ÖBB

ROHRDORFER
ZEMENT
Zementwerk Hatschek GmbH

RIEGER

SCHRETTER & CIE

STRABAG

VFI

vetropack

voestalpine

ONE STEP AHEAD.

Team Environmental Solutions & MOBILER – We are here for you



Thomas Flatscher
Sales
Phone +43 664 6174384
thomas.flatscher@railcargo.com



Helmut Rieder
Sales
Phone +43 664 833933 5
helmut.rieder@railcargo.com



Luca Negroni
Sales
Phone +43 664 88331921
luca.negroni@railcargo.com



Peter Sommer
Sales
Phone +43 664 8297389
peter.sommer@railcargo.com



Christopher Prax-Huber
Segment Manager
Phone +43 664 8263641
christopher.prax-huber@railcargo.com